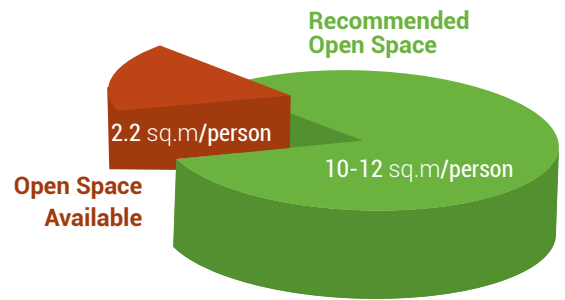


### DOES BENGALURU HAVE ADEQUATE NUMBER OF PARKS AND PLAYGROUNDS?

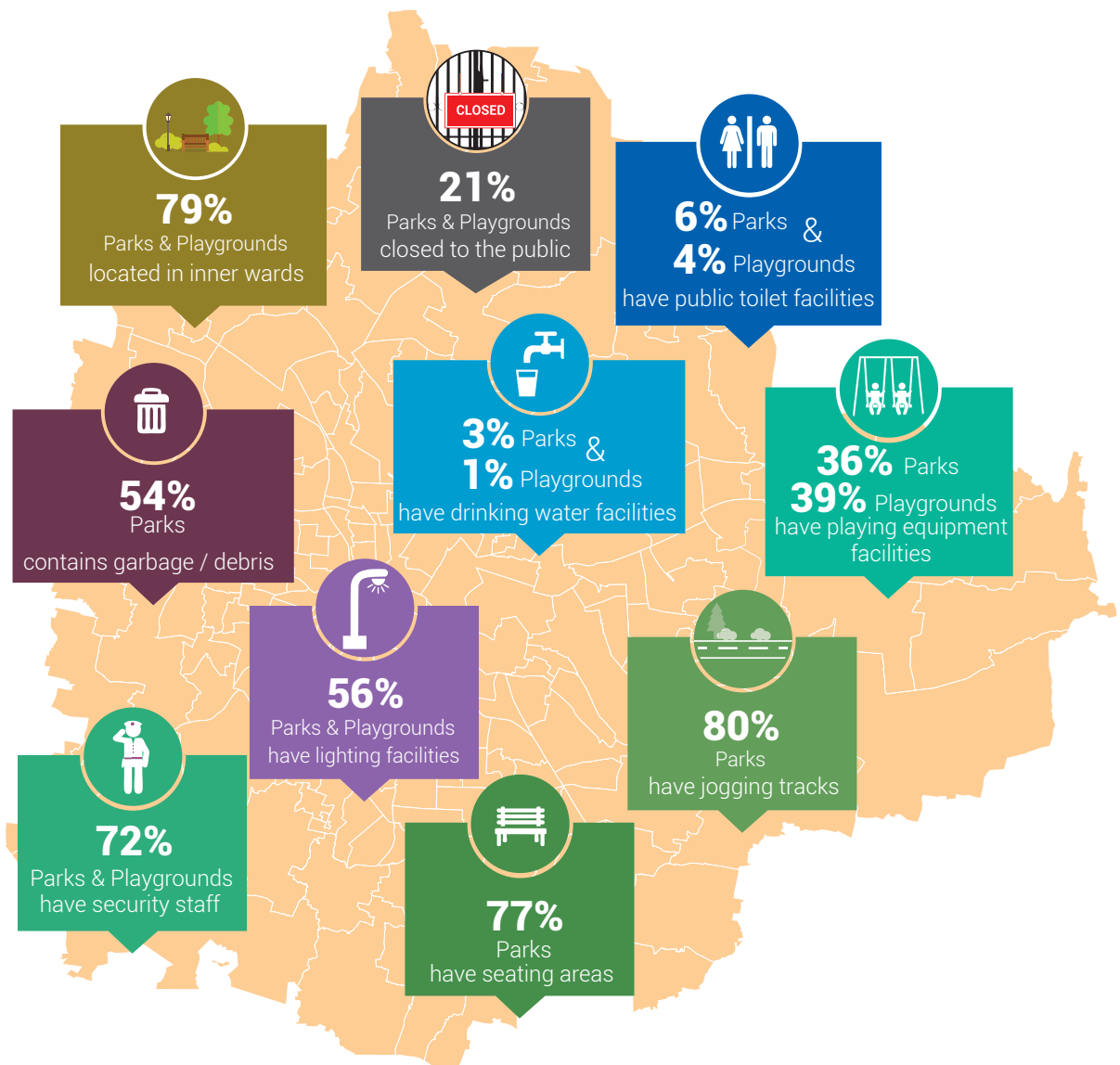
With a population of 12 million (unofficial estimate, 8.4 million as per 2011 census) and an area of 709 sq.km, the city of Bengaluru has only 19.31 sq.km dedicated towards Open Spaces like Parks and Playgrounds. This translates to **2.2 sq.m of open space per person**, which is significantly short of the recommended 10-12 sq.m by the URDPFI (Urban and Regional Development Plans Formulation and Implementation\*) guidelines set by the Ministry of Urban Development (MoUD), India.

Open spaces like parks and playgrounds are a critical necessity in urban areas. Besides their environmental significance, they provide much needed recreational spaces for everyone in the city.



\*Note : This guidelines also stipulate that facilities such as parking, public toilet, fencing, lawns etc. should be available in parks and playgrounds.

### HOW ACCESSIBLE ARE PARKS AND PLAYGROUNDS IN BENGALURU?



Supported by

## WHAT IS THE QUALITY OF PARKS AND PLAYGROUNDS IN BENGALURU?

Improving quality of parks and playgrounds is a crucial step towards ensuring that parks and playgrounds stay green and sustainable.



## HOW CAN BBMP IMPROVE THE QUALITY OF PARKS & PLAYGROUNDS?



- ▶ Provide Drinking Water Facilities
- ▶ Public Toilet Access



- ▶ Removal of garbage/debris
- ▶ Installation of garbage bins to prevent littering



- ▶ Providing adequate lighting for safety and use in the evenings

## ABOUT THE SURVEY



The list of parks and playgrounds was obtained from the BBMP. All the locations were geocoded\* on the map and duplicates were eliminated. A total of 1,115 parks, 192 playgrounds were surveyed. The survey consisted of 10 questions for Playgrounds and 10 questions for Parks. It was undertaken by a survey team, who were trained and provided a special mobile app developed to capture the survey data. Data from each survey was validated with help of geo-tagged pictures and surveys were repeated in case of discrepancies. The entire survey was undertaken over a two month period and analysis and reporting concluded in January 2017.

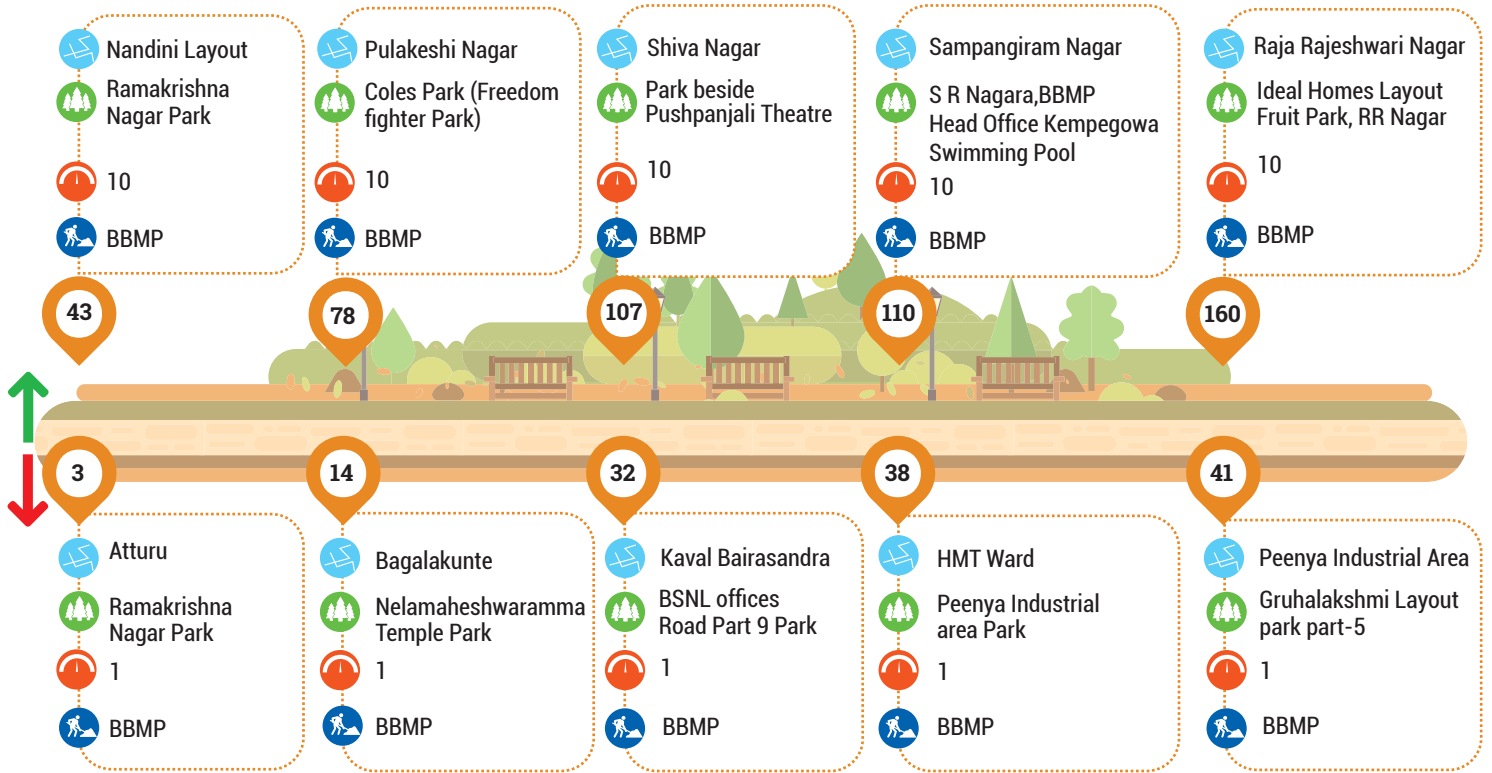
\* Geocoding is the process of converting addresses into geographic coordinates (latitude and longitude), which can be used to place markers on a map

Supported by

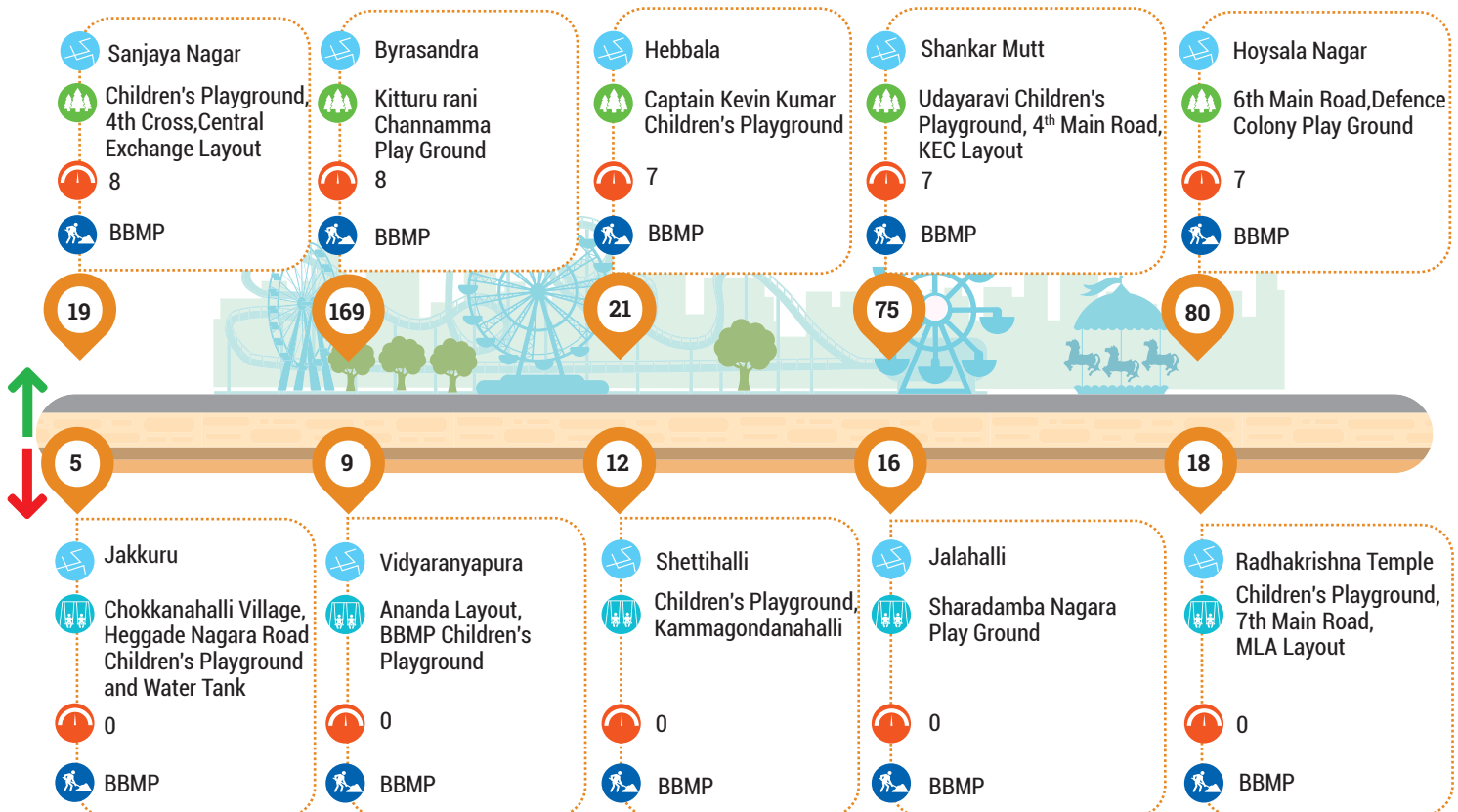


## TOP & BOTTOM FIVE PARKS

Ward No Ward Name Park Name Playground Name Score Maintained by



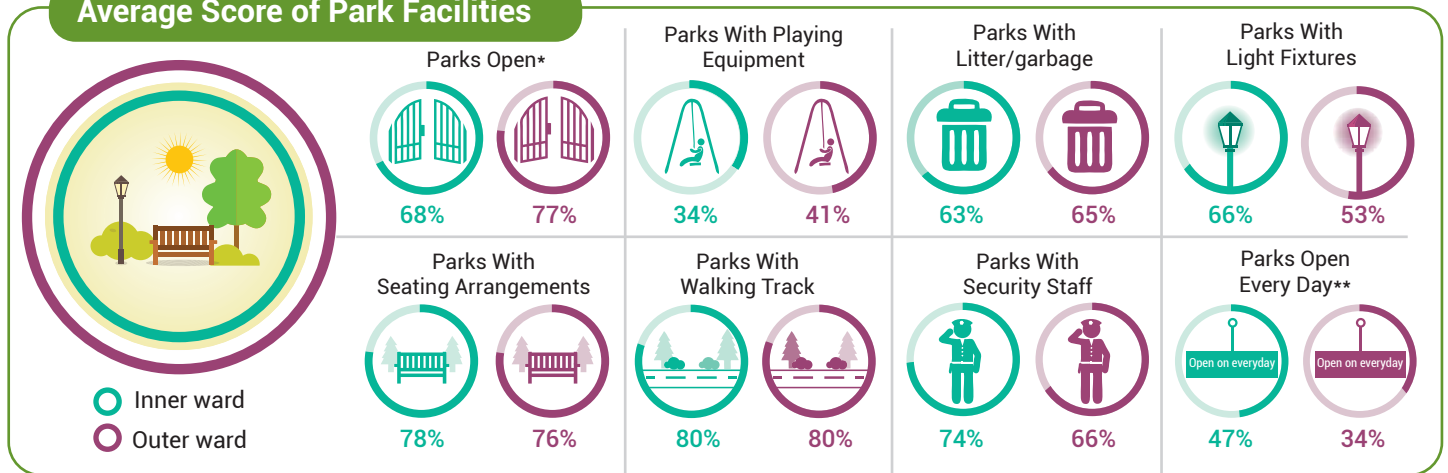
## TOP & BOTTOM FIVE PLAYGROUNDS



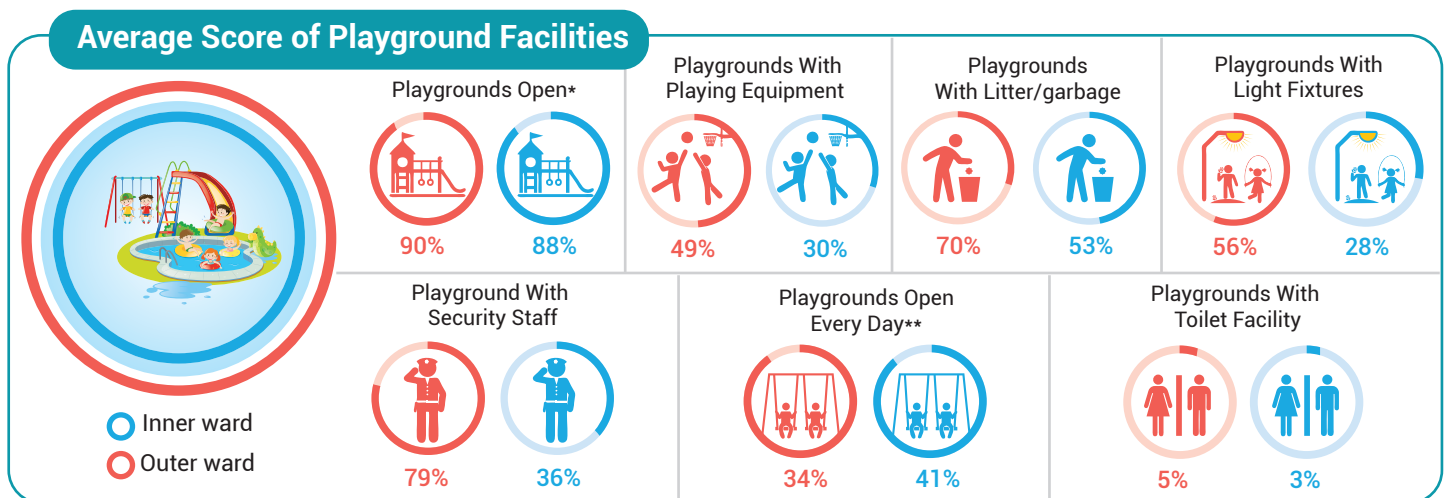
Supported by

# INNER WARD VS OUTER WARD COMPARISON ON KEY METRICS : AVAILABILITY, UPKEEP AND OTHER MAINTENANCE ASPECTS.

## Average Score of Park Facilities



## Average Score of Playground Facilities



\* Generally open | \*\* Daily open for more than 8 hrs a day

## SURVEY QUESTIONS

The parks and playgrounds survey had the following questions :

Are there timings put up on signboards?

Are there walking tracks, seating arrangement and playing facilities?

Are there security and light fixture facilities?

Are there clean public toilets and drinking water facilities?

## BBMP BUDGET ALLOCATION: FOR PARKS AND PLAYGROUNDS

2016-17



Total budget for Parks and Playgrounds allocated in budget 2016-17 (Rs. Crores)

2017-18



Total budget for Parks and Playgrounds allocated in budget 2017-18 (Rs. Crores)

Source: Bruhat Bengaluru Mahanagara Palike (BBMP) Budgets 2016-17 & 2017-18

Janaagraha Centre For Citizenship & Democracy  
4th Floor, UNI Building, Thimmaiah Road,  
Vasantha Nagara, Bengaluru – 560052  
For any inquiries or details, please contact:  
080 40790400, sapna@janaagraha.org

Supported by

The Asia Foundation

ichangemycity